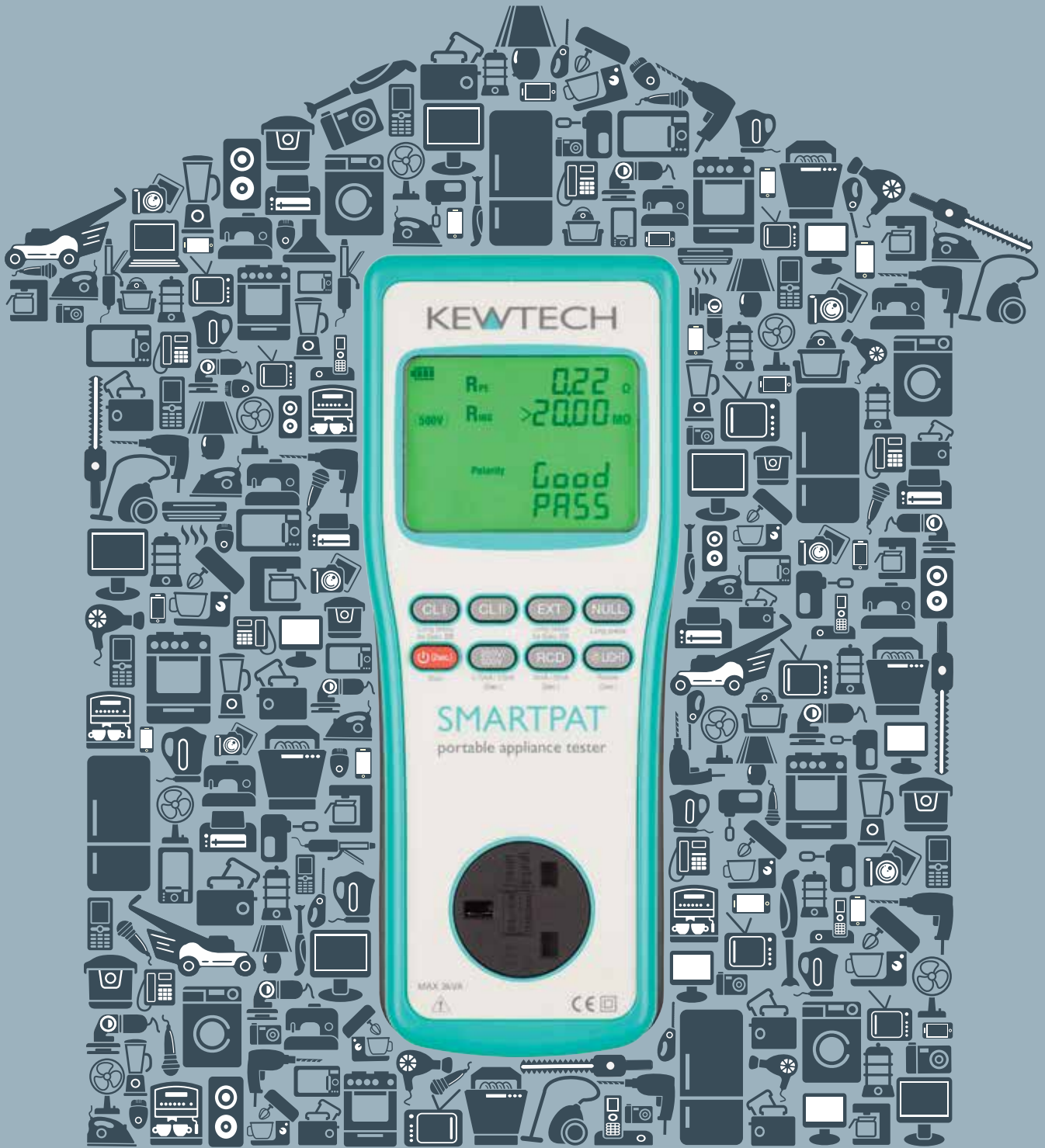


Protect life and property
from dangerous appliances



Introducing the NEW complete EZY and
SMARTPAT testing solutions from Kewtech

SIX ELEMENTS

covering your obligations for appliance safety

The new range of PAT testers from Kewtech have been designed to make PAT Testing as efficient and user-friendly as possible.

The EZYPAT, EZYPAT PLUS & SMARTPAT are battery operated, have a large easy-to-read display, a PASS (green) / FAIL (red) screen and each benefits from a light, ergonomic design. The testers also work in conjunction with the new KEWPAT APP, which enables fast documentation detailing the appliance and test results.

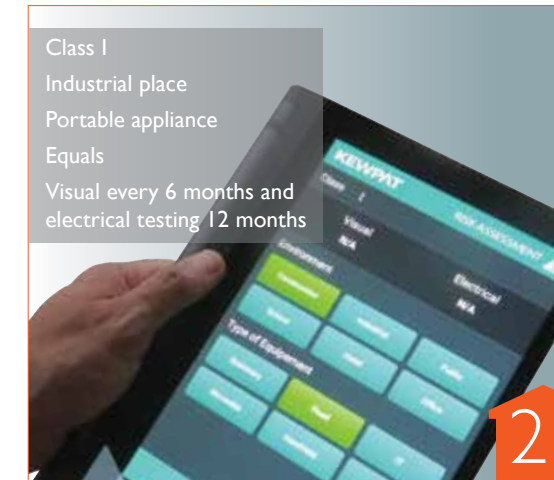


We are PAT testing for the future.
We are Kewtech.

Data collection



Risk assessment



Visual inspection & labelling



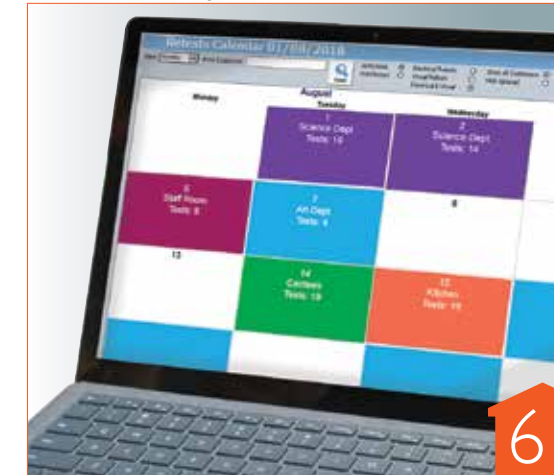
PAT testing & labelling



Product register



Retest diary



EZYPAT

Battery operated

When you only want to do 'dead testing' of appliances that have a physical or rocker on/off switch or no switch at all, the EZYPAT is for you. IT Safe with a low current earth continuity and 250V insulation test option. If you have appliances with electronic on/off switches, where the power supply is needed to switch them on (e.g. computers & TVs), then the EZYPAT Plus is the best.



feature set

- Battery operated - approx. 1400 tests
- Automatic test sequences
- PASS / FAIL – green / red screens
- Appliance status pre-check
- Quick check continuity
- 5 second continuity
- 250 V and 500 V insulation
- Substitute leakage test
- Extension lead test
- Test lead nulling
- Back light
- Extension lead adapter
- Earth Continuity test lead with probe and croc clip
- Carry bag with handle (see SMARTPAT for image)
- Quick start guide - see page 11

The EZYPAT is a manual tester. The KEWPAT APP is designed to work with it enabling fast documentation. This facilitates record documentation, appliance risk assessment and in conjunction with your SimplyPats Manual+ software, covers your obligations for holding a product register to control your PAT testing.

EZYPAT PLUS

Battery operated 230V / 110V run leakage

When you need to power on the appliance to test fully, then the EZYPAT PLUS is a great non-downloading option. This PAT tester has all the features of the EZYPAT and in addition, it will conduct a run leakage test at 110V and 230V.



Special mains lead connection can be 230V or 110V



feature set

- Battery operated - approx. 1400 tests
- Automatic test sequences
- Appliance status pre-check
- PASS / FAIL – green / red screens
- Quick check continuity
- 5 second continuity
- 250 V and 500 V insulation
- Substitute leakage test
- 110V & 230V run test
- Extension lead test
- Test lead nulling
- Backlight
- Extension lead adapter and mains lead
- Earth Continuity test lead with probe and croc clip
- Carry bag with handle (see SMARTPAT for image)
- Quick start guide - see page 11

The EZYPAT PLUS is a manual tester. The KEWPAT APP is designed to work with it enabling fast documentation. This facilitates record documentation, appliance risk assessment and in conjunction with your SimplyPats Manual+ software, covers your obligations for holding a product register to control your PAT testing.

SMARTPAT

Battery operated 230V / 110V run leakage with remote control function

The SMARTPAT, together with the KEWPAT APP, covers all the functionality and more of a traditional downloading PAT tester.

Data collection: Provides a very fast solution for logging your testing. Special drop down menus on the APP ensures quick appliance documentation enabling you to add basic information such as appliance and location, or more detailed logging such as make, model, serial number and special comments as well.

Testing: The APP controls the tester so you can use the standard auto-tests or make up your own. The test results are automatically included in the appliance record.

Risk assessment: All appliances need a risk assessment. The APP has a risk assessment function that is designed to be optionally engaged during each test if required, leading to desired frequency of re-test.

Cable resistance: Class I equipment has a variable pass limit dependent on the length of the mains lead. There is a simple cable calculator on the APP that can be easily engaged during testing.

Extra functionality: The APP makes full use of your mobile device as it can take pictures, scan barcodes / QR codes and it can also give you voice prompts.

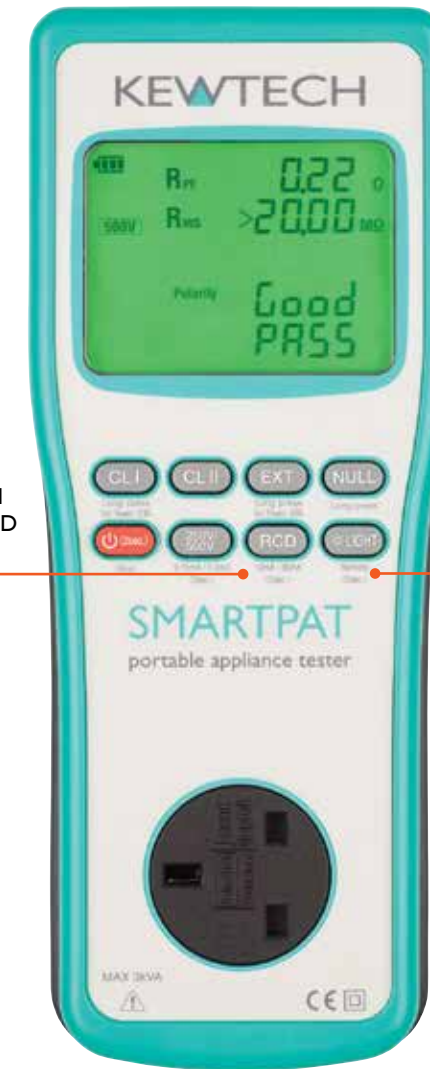


The SMARTPAT in conjunction with the KEWPAT APP and SimplyPats Manual+ software is the ultimate in PAT testing. It gives you control over your testing sequences, you can collect as much data as you need, including risk assessment, and provides an easy-to-use, yet sophisticated PC based Product Register. Modern technology making testing faster, easier and more robust.



SMARTPAT

Battery operated 230V / 110V run leakage with remote control function



10 mA and 30 mA RCD autotest

Remote switch for connection to mobile device



feature set

- Battery operated - approx. 1400 tests
- Remote connectivity
- Automatic test sequences
- Customisable auto tests with the KEWPAT APP
- Appliance status pre-check
- PASS / FAIL – green / red screens
- Quick check continuity
- 5 second continuity
- 250V and 500V Insulation
- Substitute leakage test
- 110V & 230V run test
- Extension lead test
- Portable RCD testing – without tripping the installed RCD
- Test lead nulling
- Backlight
- Extension lead adapter and mains lead
- Earth Continuity test lead with probe and croc clip
- Carry bag with handle
- Quick start guide - see page 11

PC SOFTWARE

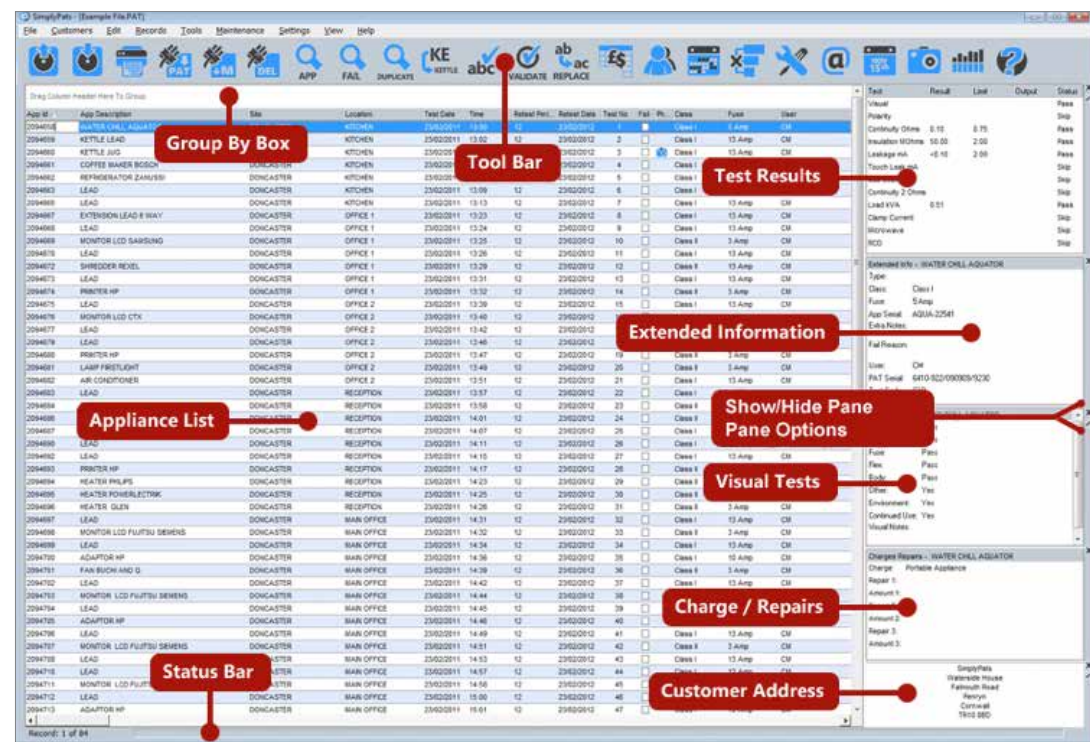
SimplyPats Manual+ Documenting Software

A dedicated PAT Testing software solution for your Microsoft Windows™ PC is available from SimplyPats, designers of the Kewtech PAT APP. The software offers advanced features for those who need to take the management of their PAT testing data and reporting to the next level. It is the perfect solution for the Code of Practice requirement of a Product Register.



Sort, Group and Find Data Easily

Data can easily be sorted by clicking on any of the column headers on the main grid, while grouping allows you to arrange data into expandable and collapsible groups.



Test Reports, Certificates and Electronic Export Options

There is a test report for you:



Retest Calendar and Overdue Appliances

A visual overview of Retest Dates are shown on the Retest Calendar or Review Customers screen.

Alternatively, you can enter a date range to show all appliances within the current file due for retesting within that period. The Overdue Appliances lists all appliances past their retest date, plus those predicted to be overdue within 'x' number of days.

KEWPAT APP

Data collection

Fast entry of the essential product information; what, where & ID number.

- Dropdown menus for:
 - Customer
 - Site
 - Location
 - Description
- Auto-number increment
- New description or repeat
- Appliance description
- Scan feature for barcodes and QR codes



Risk assessment

A fantastic tool to help you with appliance risk assessment and testing frequency.

- What type of product?
- What type of establishment?

The recommendations according to the Code of Practice are displayed, you can adjust for any additional factors i.e. a damp environment, should you wish.



Customisable auto-test

Create your own auto test. Choose which tests, the pass limits, the duration and any repeats.



Testing remotely

Your phone or tablet drives the tester and the results are automatically transmitted back.



Record saving

After testing simply add any additional information if required. Press print to produce a label, or press Save to save to database and start a new test.




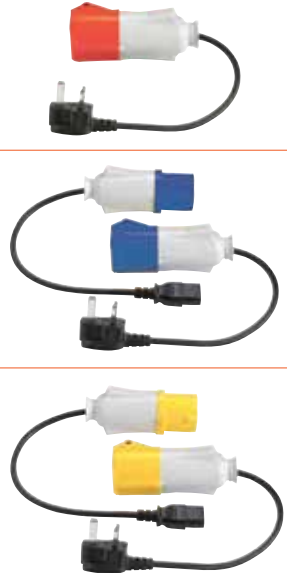
Additional features

- Take a picture and add to the product register
- Scan the barcode / QR code
- Voice prompt help
- Add your own logo to printed labels
- Manage your databases
- Manage your customers
- WiFi direct to PC



TESTING ACCESSORIES

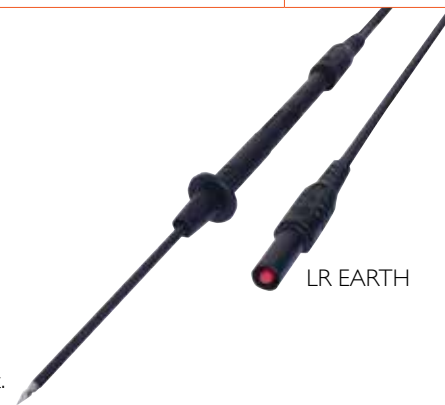
The SMARTPAT & EZYPAT PLUS enable a comprehensive test of industrial appliances as they are able to perform a run / leakage test at 110V and 230V. To connect to these appliances the appropriate adapter is required. The EZYPAT can test industrial products with a dead test only.

TESTING PRODUCTS WITH INDUSTRIAL BS4343 PLUGS		
PAT ACCESSORIES AND DESCRIPTION	EZYPAT	EZYPAT PLUS SMARTPAT
ELI10PAT KIT 	Earth continuity Insulation 250V (or 500V) Substitute leakage 110V Extension lead	Earth continuity Insulation 250V (or 500V) Substitute leakage 110V Extension lead Class I run / leakage Class II touch current
EL KIT 	Earth continuity Insulation 250V (or 500V)	Earth continuity Insulation 250V (or 500V)
	Earth continuity Insulation 250V (or 500V) Substitute leakage 230V Extension lead	Earth continuity Insulation 250V (or 500V) Substitute leakage 230V Extension lead Class I run / leakage Class II touch current
	Earth continuity Insulation 250V (or 500V) Substitute leakage 110V Extension lead	Earth continuity Insulation 250V (or 500V) Substitute leakage 110V Extension lead Class I run / leakage Class II touch current

Long reach earth probe

A practical limitation of PAT testing can be cowls and coverings, which prevent you contacting to earthed points, typically fan cowls and monitor cases. For this we have the long reach earth probe.

As the SMARTPAT range of testers enables you to be able to null out the test lead resistance, you can use any test lead as long as it has standard 4mm connectors to suit the instrument.



LR EARTH

TESTING ACCESSORIES



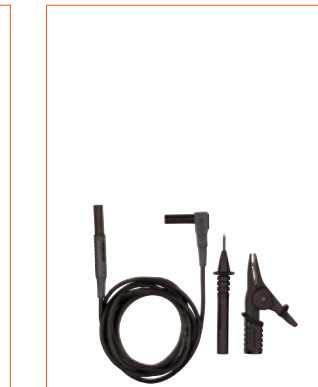
EZYMAIN
230V Mains lead for EZYPAT PLUS & SMARTPAT to connect to the mains supply so that the tester can supply power to the device under test.



EZY110
110V Supply lead for EZYPAT PLUS & SMARTPAT to connect to the mains supply so that the tester can supply power to the device under test.



EZYEXT
Test lead adapter for connecting the Tester and an extension lead.



EZYEARTH
Test lead - safety crocodile clip and probe. The probe and crocodile clip are interchangeable.

DOCUMENTATION

The Code of Practice centres around the importance of documentation with the requirement of a product register.

Kewtech have two solutions for documentation. The first is digitally, by way of the KEWTECH APP and PC software. The second is manually, by use of either the PATLOG 1 or PATLOG 3 log books.



SIMPLYPATS MANUAL+
Electronically on your PC with SimplyPats Manual +



KEWPAT APP
For fast data input, facilitated by customisable dropdown menus.



PATLOG 1
For when you are testing for different companies. 40 pages with duplicate sheets. A4 format.



PATLOG 3
For single company use. To be left on site and includes resistance tables and examples of compiling when using battery PAT testers or mains PAT testers. A5 format.

LABELLING

The fourth edition of the Code of Practice requires labelling after testing. It specifically does not call for the date of the next test to be included on the label. The code centres around the importance of documentation with the requirement of a product register.

Labelling

The Kewtech labelling system falls into line with the latest recommendations. All Kewtech printed labels come in a box and are fan folded so are easy to write on as they are flat (unlike those on a roll). We also offer a portable printer solution that prints a label from the KEWPAT APP, that can be customised to include your logo, a barcode or a QR code.

There is also the addition of visual inspection labels for where it is not necessary to carry out the electrical test.

Kewtech's snap tags provide a great solution for labelling appliances in more hard-wearing environments. They are plastic housings that are attached to the appliance's cable. The KEWSNAP 1 has plastic clips which clip over the mains cable (slots for cable ties are also incorporated). The KEWSNAP 2 is designed to work solely with cable ties, just put the label in the enclosure, snap it closed and cable tie it to the mains lead.



KEWPRINT1



KEWROLL



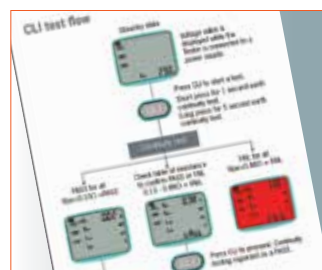
KEWSNAP1



KEWSNAP2

SUPPORT

Each tester comes with a handy quick start guide containing easy to understand flow charts. Easy to follow, no fuss, guidance.



TRAINING

For all aspects of appliance safety

Kewtech, along with our training partners, can offer PAT training courses for the **Code of Practice for In-service Inspection and Testing of Electrical Equipment**. Our training is designed to empower the participant to be able to understand all aspects of PAT testing, not just the electrical testing part. We take the Tell, Show, Do & Apply approach and create a dynamic environment to help the learning process.

Of course we will show you the time saving features of the new EZY and SMARTPAT range of testers, but if you already have PAT testing equipment we can also train you on that as well.

Call: 01494 792 212 or go to Kewtechcorp.com



- CODE OF PRACTICE
- RISK ASSESSMENT
- PRODUCT REGISTER
- VISUAL TESTING
- ELECTRICAL TESTING
- LABELLING
- DOCUMENTATION

Topics covered

Basic electrical knowledge	Made fun and easy.
Why PAT test?	Why we should want to and what are our legal obligations?
What governs the system of PAT testing in the UK?	The Code of Practice and it is much more than just electrical testing. It is the whole system of appliance safety.
Product register	Why is this central to the PAT testing requirement? How to organise it.
Risk assessment	Every appliance has to have a risk assessment – sounds onerous – we can make it easy.
Visual inspection	This is always more important than people think.
Electrical testing	Class of equipment, types of equipment and how to test.
Labelling	Requirements to the latest Code of Practice.
Practical testing	This is where you apply your knowledge that you have just learnt.
Multiple choice exam	Above all else this is our feedback document – if you struggle on any point then we haven't done our job correctly.
WE WILL STAY UNTIL YOU ARE HAPPY WITH THE METHODOLOGY AND THE PRACTICAL ASPECTS OF PAT TESTING	

COMPARE & ACCESSORISE

	EZYPAT	EZYPAT PLUS	SMARTPAT
Battery operated	•	•	•
Long battery life (approx. 1400 tests)	•	•	•
Automatic test sequences	•	•	•
PASS / FAIL – green / red screens	•	•	•
Appliance status pre - check	•	•	•
Fast continuity check	•	•	•
5 second continuity test	•	•	•
250V insulation	•	•	•
500V insulation	•	•	•
Substitute leakage test	•	•	•
Extension lead test	•	•	•
Test lead nulling	•	•	•
Back light	•	•	•
Works in conjunction with the KEWPAT APP in manual mode	•	•	•
110V run / leakage test		•	•
230V run / leakage test		•	•
Portable RCD test 10mA and 30mA			•
Full automatic and downloadable PAT capability in conjunction with the KEWPAT APP giving full control over bespoke auto-tests and data collection			•
ACCESSORIES INCLUDED			
Extension lead adapter	•	•	•
Earth continuity test lead with probe and croc clip	•	•	•
Carry bag with strap	•	•	•
Mains lead	•	•	•
Trade Price	£595.00	£695.00	£995.00

PAT testing accessories

		Trade Price
ELI10PAT KIT	110V appliance adapter kit	£49.00
ELKIT	ELI10PAT kit plus 230V & 400V 16A adapters	£159.00
EZYEARH	Earth continuity test lead with probe and croc clip	£35.00
EZYEXT	Red extension lead adapter	£25.00
EZYMAIN	230V Mains lead for the EZYPAT PLUS and SMARTPAT	£36.00
EZYI10	110V Supply lead for the EZYPAT PLUS and SMARTPAT	£45.00
KEWSNAP 1	50 snap tags with clips	£45.00
KEWSNAP 2	50 snap tags without clips for cable tie fixing	£45.00
KEWPRINT	Bluetooth label printer	£550.00
KEWROLL	460 labels for KEWPRINT	£17.00
LR EARTH	Long reach 65mm earth probe	£39.00
PATLOG1	A4 PAT testing logbook / product register	£19.00
PATLOG3	A5 PAT testing logbook / product register	£12.00
250FAIL	250 appliance fail labels	£12.00
500PASS	500 appliance pass labels	£17.00
500VIS	500 appliance visual pass labels	£17.00
KEWPAT APP	FREE download	

TECH SPECS

PROTECTIVE CONDUCTOR RESISTANCE TEST

Measuring range	0.00 - 20.00 Ω (NULL value inc)*
Over-range indication	> 20.00 Ω
Resolution	0.01 Ω
Open-circuit voltage	5V ±0.4V DC
Measuring current	200 mA DC (nominal value)
Accuracy	±3%rdg ±5dgt

* Resistances exceeding 3 Ω cannot be cancelled by NULL function.

MAINS VOLTAGE

Display range	30 - 270V
Hi/ Lo indication	< 30V: No voltage indication > 270V: 270V
Resolution & Accuracy	1V ±3%rdg ±5dgt

INSULATION

Rated voltage	250V	500V
Measuring range	0.00 - 20.00 MΩ	
Over-range indication	> 20.00 MΩ	
Resolution	0.01 MΩ	
No-load voltage	250V DC +20%, -0%	500V DC +20%, -0%
Short-circuit current	1.5 mA DC or less	
Rated current	1 - 1.2 mA with a load of 0.25 MΩ	1 to 1.2 mA with a load of 0.5 MΩ
Accuracy	±2%rdg ±3dgt	

SUBSTITUTE LEAKAGE

Measuring range	0.10 - 12.00 mA rms
Over-range indication	> 12.00 mA
Resolution	0.01 mA
Open-circuit voltage/ Freq.	30V ±5V rms / 50 Hz ±5%
Measuring current	1.2 mA AC ±0.5 mA (when measuring 12.00 mA)
Accuracy	±3%rdg ±5dgt

INSULATION TEST BETWEEN L-N

Open-circuit voltage	4.5V ±0.5V DC
Criteria of judgement	100 kΩ ±20 kΩ or less: LCD shows "<0.10 MΩ" and the measurement is halted.

RUN LEAKAGE

Item	Load current	Leakage current
Mains voltage range	100 - 253 V / 50 Hz	
Measuring range	0.10 - 13.00 A rms	0.10 - 20.00 mA rms
Display range	0.00 - 13.00 A	0.00 - 20.00 mA
Over-range indication	> 13.00 A	> 20.00 mA
Resolution	0.01 A	0.01 mA
Accuracy	±10%rdg ±5dgt	±3%rdg ±5dgt
Max. rating	3 kVA max. / 15 sec. cont.	

RCD TEST

Rated voltage	230V - 15% to +10% / 50Hz	
Rated current	10 mA / 30 mA	
Test duration	×1: 0.0 ms - 500.0 ms	×5: 0.0 ms - 40.0 ms
Test current accuracy	2% - 8%	
Operating time accuracy	≤ ±2 ms (< 40 ms) ±8 ms (>40 ms)	

APPLICABLE STANDARDS

Safety	IEC/EN61010-1 CAT II 300V-instrument IEC/EN61010-2-030 IEC/EN61010-031 CAT III 600V
EMC	EN61326-1, 2-2

BATTERIES

Possible number of measurements where battery voltage is within the effective range (measuring every 30 sec)	Approx. 1400 times (CLI Rpe: 0 Ω, Rins: 1.1 MΩ)
Replacement batteries	6 x 1.5V AA Alkaline or 1.2V rechargeable.

WEIGHTS & DIMENSIONS

	Packaged		Instrument only	
	Wt.Approx	DIMS (mm)	Wt.Approx	DIMS (mm)
SMARTPAT	1840g	290 (L) 140 (W) 130 (D)	970g	261 (L) 104 (W) 57 (D)
EZYPAT PLUS	1820g		950g	
EZYPAT	1610g		860g	



EZYPAT

EZYPAT PLUS

SMARTPAT Downloading PAT in conjunction with KEWPAT APP

PRODUCT SELECTION

What is the best PAT testing solution for you?

